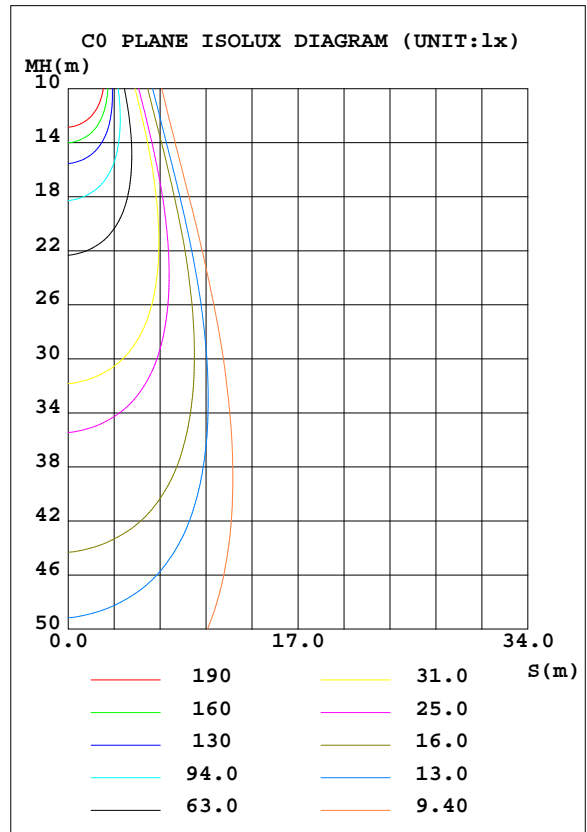
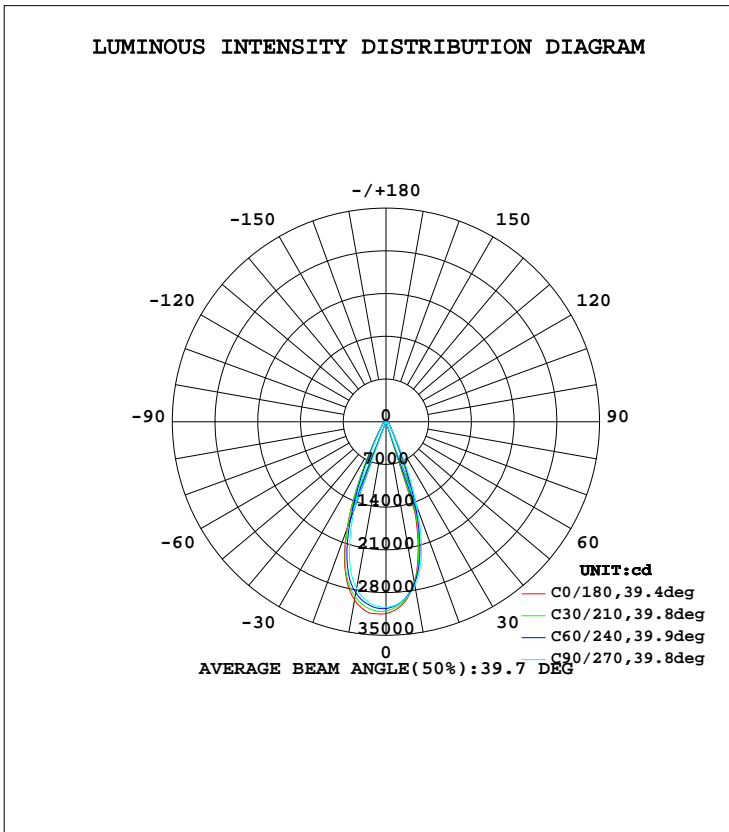


LUMINAIRE PHOTOMETRIC TEST REPORT

Test:U:230.1V I:0.5816A P:129.4W PF:0.9669 Lamp Flux:76.6908x210 lm		
NAME: SPS1304-HL12B-210NW-60-5	TYPE:	WEIGHT:
SPEC.:	DIM.:	SERIAL No.:
MFR.:	SUR.:D212mm	PROTECTION ANGLE:

DATA OF LAMP		PHOTOMETRIC DATA Eff: 124.43 lm/W			
MODEL		I _{max} (cd)	31531	S/MH(C0/180)	0.65
NOMINAL POWER(W)	130	LOR(%)	100.0	S/MH(C90/270)	0.61
RATED VOLTAGE(V)	230	TOTAL FLUX(lm)	16105	η UP, DN(C0-180)	0.5, 48.5
NOMINAL FLUX(lm)	76.6908	CIE CLASS	DIRECT	η UP, DN(C180-360)	0.6, 50.4
LAMPS INSIDE	210	η up(%)	1.1	CIBSE SHR NOM	0.50
TEST VOLTAGE(V)	230	η down(%)	98.9	CIBSE SHR MAX	0.60



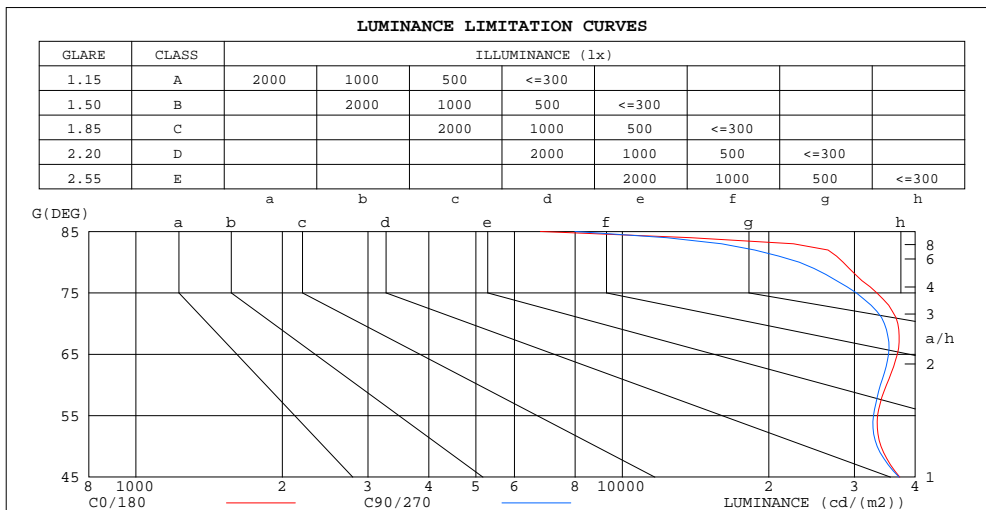
C Range: 0 - 360DEG
 C Interval: 10.0DEG
 Test Speed: HIGH
 Temperature:25.3DEG
 Operators:
 Test Date:2016-08-12

γ Range: 0 - 180DEG
 γ Interval: 1.0DEG
 Test System:EVERFINE GO-2000B_V1 SYSTEM V2.0.287
 Humidity:65.0%
 Test Distance:10.100m [K=1.0000]
 Remarks:

ZONAL FLUX DIAGRAM
AND LUMINANCE LIMITATION CURVES

ZONAL FLUX DIAGRAM:

γ	C0	C45	C90	C135	C180	C225	C270	C315	γ	Φ zone	Φ total	Φ lum,lamp
10	2674	2689	2723	2782	2966	2878	2778	2673	0- 10	2785	2785	17.3,17.3
20	1188	1298	1479	1696	1872	1772	1537	1321	10- 20	6132	8918	55.4,55.4
30	263.4	275.3	306.3	363.3	400.6	379.8	328.0	289.8	20- 30	3558	12476	77.5,77.5
40	118.5	118.2	121.5	130.0	140.0	135.1	126.6	119.8	30- 40	1220	13696	85,85
50	77.22	76.04	75.81	77.63	82.29	79.42	77.05	75.28	40- 50	748.8	14445	89.7,89.7
60	61.62	60.74	59.89	59.21	62.16	60.44	60.05	59.38	50- 60	605.6	15051	93.5,93.5
70	44.50	43.19	41.75	40.36	43.19	42.10	43.04	42.88	60- 70	518.0	15569	96.7,96.7
80	17.43	15.24	14.16	14.14	15.55	14.93	15.48	17.03	70- 80	303.5	15872	98.6,98.6
90	0.1915	0.1899	0.1873	0.1923	0.2380	0.2266	0.2252	0.2197	80- 90	53.35	15925	98.9,98.9
100	0.3168	0.3117	0.3077	0.3110	0.3882	0.3743	0.3718	0.3660	90-100	2.975	15928	98.9,98.9
110	0.4786	0.4696	0.4606	0.4600	0.5597	0.5434	0.5411	0.5392	100-110	4.443	15933	98.9,98.9
120	0.7581	0.7428	0.7173	0.6980	0.8036	0.7930	0.7994	0.8216	110-120	6.132	15939	99,99
130	1.737	1.672	1.532	1.406	1.490	1.537	1.621	1.798	120-130	9.697	15949	99,99
140	4.552	4.344	3.960	3.557	3.714	3.879	4.204	4.615	130-140	20.57	15969	99.2,99.2
150	8.649	8.345	7.810	7.240	7.798	7.965	8.396	8.938	140-150	37.43	16007	99.4,99.4
160	12.18	11.97	11.60	11.12	12.21	12.20	12.45	12.78	150-160	46.55	16053	99.7,99.7
170	14.27	14.33	14.24	13.97	15.00	14.88	14.87	14.84	160-170	37.56	16091	99.9,99.9
180	15.70	15.73	15.62	15.49	15.70	15.72	15.65	15.48	170-180	14.34	16105	100,100
DEG	LUMINOUS INTENSITY:×10cd									UNIT:lm		



LUMINANCE cd/(m2)		
G(DEG)	C0/180	C90/270
85	6783	7986
80	28438	23106
75	33365	30273
70	36855	34583
65	36771	35258
60	34912	33931
55	33471	32823
50	34030	33410
45	37181	37081

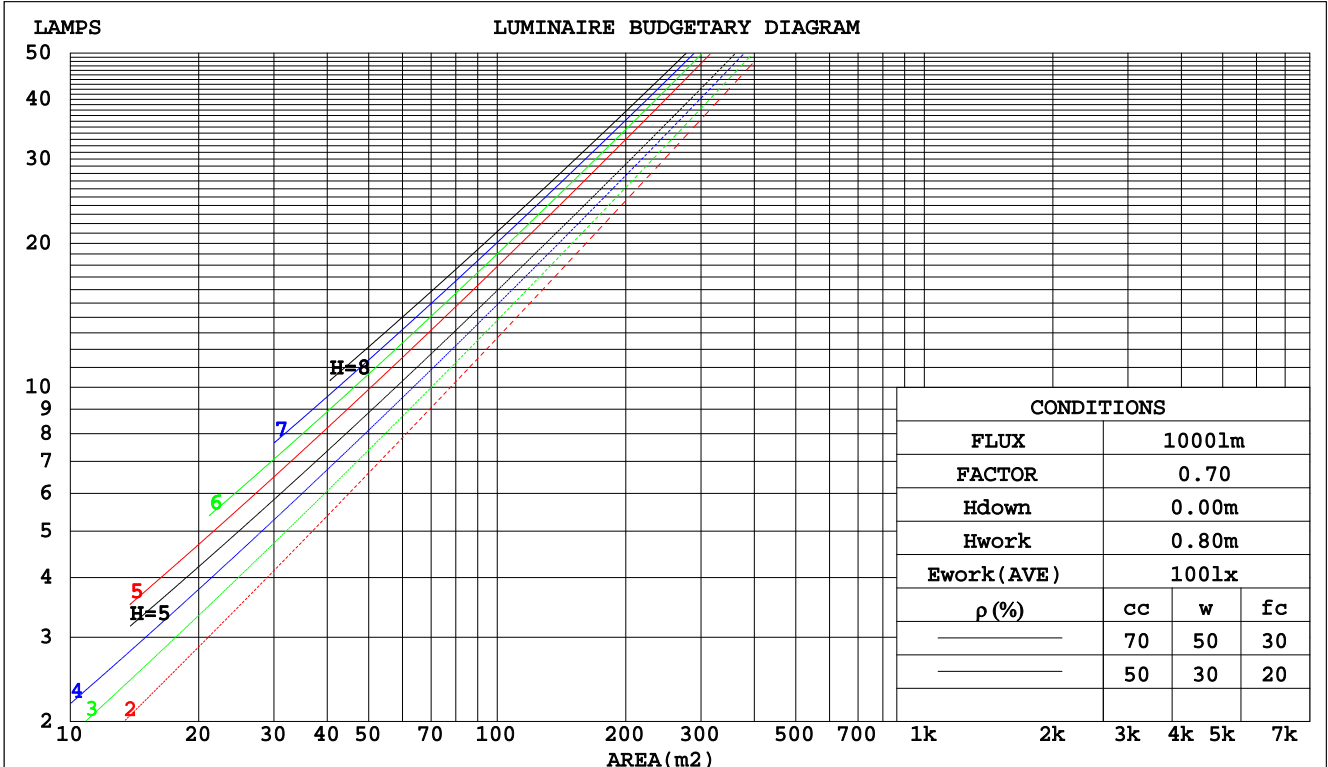
C Range: 0 - 360DEG
C Interval: 10.0DEG
Test Speed: HIGH
Temperature:25.3DEG
Operators:
Test Date:2016-08-12

γ Range: 0 - 180DEG
 γ Interval: 1.0DEG
Test System:EVERFINE GO-2000B_V1 SYSTEM V2.0.287
Humidity:65.0%
Test Distance:10.100m [K=1.0000]
Remarks:

CU AND LUMINAIRE BUDGETARY ESTIMATE DIAGRAM

Test:U:230.1V I:0.5816A P:129.4W PF:0.9669 Lamp Flux:76.6908x210 lm		
NAME: SPS1304-HL12B-210NW-60-5	TYPE:	WEIGHT:
SPEC.:	DIM.:	SERIAL No.:
MFR.:	SUR.:D212mm	PROTECTION ANGLE:

pcc	80%			70%			50%			30%			10%			0
pw	50%	30%	10%	50%	30%	10%	50%	30%	10%	50%	30%	10%	50%	30%	10%	0
pfc	20%			20%			20%			20%			20%			0
RCR	RCR:Room Cavity Ratio						Coefficients of Utilization(CU)									
0.0	1.19	1.19	1.19	1.16	1.16	1.16	1.10	1.10	1.10	1.06	1.06	1.06	1.01	1.01	1.01	.99
1.0	1.10	1.07	1.05	1.08	1.05	1.03	1.03	1.02	.00	.00	.98	.97	.96	.95	.94	.92
2.0	1.02	.98	.95	1.00	.97	.93	.97	.94	.91	.94	.91	.89	.91	.89	.87	.85
3.0	.96	.91	.87	.94	.90	.86	.91	.87	.84	.89	.86	.83	.86	.84	.81	.80
4.0	.90	.84	.80	.89	.84	.80	.86	.82	.79	.84	.81	.78	.82	.79	.77	.75
5.0	.85	.79	.75	.84	.79	.75	.82	.77	.74	.80	.76	.73	.79	.75	.72	.71
6.0	.80	.75	.71	.80	.74	.70	.78	.73	.70	.77	.72	.69	.75	.71	.69	.67
7.0	.76	.71	.67	.76	.70	.67	.74	.70	.66	.73	.69	.66	.72	.68	.65	.64
8.0	.73	.67	.63	.72	.67	.63	.71	.66	.63	.70	.66	.63	.69	.65	.62	.61
9.0	.70	.64	.61	.69	.64	.60	.68	.63	.60	.67	.63	.60	.66	.62	.60	.58
10.0	.67	.61	.58	.66	.61	.58	.65	.61	.58	.65	.60	.57	.64	.60	.57	.56



C Range: 0 - 360DEG
 C Interval: 10.0DEG
 Test Speed: HIGH
 Temperature: 25.3DEG
 Operators:
 Test Date: 2016-08-12

γ Range: 0 - 180DEG
 γ Interval: 1.0DEG
 Test System: EVERFINE GO-2000B_V1 SYSTEM V2.0.287
 Humidity: 65.0%
 Test Distance: 10.100m [K=1.0000]
 Remarks:

WEC AND CCEC

Test:U:230.1V I:0.5816A P:129.4W PF:0.9669 Lamp Flux:76.6908x210 lm		
NAME: SPS1304-HL12B-210NW-60-5	TYPE:	WEIGHT:
SPEC.:	DIM.:	SERIAL No.:
MFR.:	SUR.:D212mm	PROTECTION ANGLE:

ρcc	80%			70%			50%			30%			10%			0
ρw	50%	30%	10%	50%	30%	10%	50%	30%	10%	50%	30%	10%	50%	30%	10%	0
ρfc	20%			20%			20%			20%			20%			0
RCR	RCR:Room Cavity Ratio						Wall Exitance Coefficients(WEC)									
0.0																
1.0	.187	.106	.034	.180	.103	.033	.167	.096	.031	.155	.089	.029	.143	.083	.027	
2.0	.176	.096	.030	.170	.094	.029	.159	.088	.027	.148	.083	.026	.139	.078	.025	
3.0	.164	.087	.026	.159	.085	.026	.149	.081	.025	.141	.077	.024	.132	.073	.023	
4.0	.153	.080	.023	.149	.078	.023	.141	.075	.022	.133	.071	.022	.126	.068	.021	
5.0	.144	.073	.021	.140	.072	.021	.133	.069	.020	.126	.067	.020	.120	.064	.019	
6.0	.136	.068	.019	.132	.067	.019	.126	.065	.019	.120	.062	.018	.114	.060	.018	
7.0	.128	.063	.018	.125	.062	.018	.120	.060	.017	.114	.059	.017	.109	.057	.017	
8.0	.122	.059	.017	.119	.059	.017	.114	.057	.016	.109	.055	.016	.105	.054	.016	
9.0	.116	.056	.016	.113	.055	.015	.109	.054	.015	.105	.052	.015	.101	.051	.015	
10.0	.110	.053	.015	.108	.052	.015	.104	.051	.014	.100	.050	.014	.097	.049	.014	

ρcc	80%			70%			50%			30%			10%			0
ρw	50%	30%	10%	50%	30%	10%	50%	30%	10%	50%	30%	10%	50%	30%	10%	0
ρfc	20%			20%			20%			20%			20%			0
RCR	RCR:Room Cavity Ratio						Ceiling Cavity Exitance Coefficients(CCEC)									
0.0	.199	.199	.199	.170	.170	.170	.116	.116	.116	.067	.067	.067	.021	.021	.021	
1.0	.180	.166	.153	.154	.142	.131	.106	.098	.091	.061	.057	.053	.019	.018	.017	
2.0	.165	.141	.121	.142	.121	.104	.097	.084	.073	.056	.049	.043	.018	.016	.014	
3.0	.153	.122	.098	.131	.105	.085	.090	.073	.060	.052	.043	.035	.017	.014	.011	
4.0	.142	.108	.081	.122	.093	.071	.084	.065	.050	.048	.038	.029	.016	.012	.010	
5.0	.133	.096	.069	.114	.083	.060	.078	.058	.042	.045	.034	.025	.015	.011	.008	
6.0	.125	.086	.059	.107	.075	.052	.074	.052	.036	.043	.031	.022	.014	.010	.007	
7.0	.118	.079	.052	.101	.068	.045	.070	.048	.032	.041	.028	.019	.013	.009	.006	
8.0	.111	.072	.046	.096	.063	.040	.066	.044	.028	.039	.026	.017	.012	.009	.006	
9.0	.106	.067	.041	.091	.058	.036	.063	.041	.025	.037	.024	.015	.012	.008	.005	
10.0	.101	.063	.037	.087	.054	.032	.060	.038	.023	.035	.023	.014	.011	.007	.005	

C Range: 0 - 360DEG
 C Interval: 10.0DEG
 Test Speed: HIGH
 Temperature:25.3DEG
 Operators:
 Test Date:2016-08-12

γ Range: 0 - 180DEG
 γ Interval: 1.0DEG
 Test System:EVERFINE GO-2000B_V1 SYSTEM V2.0.287
 Humidity:65.0%
 Test Distance:10.100m [K=1.0000]
 Remarks:

UGR(Unified Glare Rating) Table

Test:U:230.1V I:0.5816A P:129.4W PF:0.9669 Lamp Flux:76.6908x210 lm										
NAME: SPS1304-HL12B-210NW-60-5					TYPE:			WEIGHT:		
SPEC.:					DIM.:			SERIAL No.:		
MFR.:					SUR.:D212mm			PROTECTION ANGLE:		
ceiling/cavity	0.7	0.7	0.5	0.5	0.3	0.7	0.7	0.5	0.5	0.3
walls	0.5	0.3	0.5	0.3	0.3	0.5	0.3	0.5	0.3	0.3
working plane	0.2	0.2	0.2	0.2	0.2	0.2	0.2	0.2	0.2	0.2
Room dimensions	Viewed crosswise					Viewed endwise				
x = 2H y = 2H	20.7	21.6	20.9	21.7	21.9	20.6	21.5	20.8	21.7	21.9
3H	22.6	23.4	22.8	23.6	23.8	22.4	23.2	22.6	23.4	23.6
4H	23.3	24.1	23.6	24.3	24.6	23.0	23.8	23.3	24.1	24.3
6H	23.7	24.5	24.0	24.7	25.0	23.4	24.1	23.7	24.4	24.7
8H	23.9	24.6	24.2	24.9	25.1	23.4	24.2	23.8	24.4	24.7
12H	23.8	24.5	24.2	24.8	25.1	23.4	24.1	23.8	24.4	24.7
4H 2H	21.4	22.2	21.7	22.4	22.7	21.3	22.1	21.6	22.4	22.6
3H	23.4	24.1	23.8	24.4	24.7	23.3	24.0	23.6	24.3	24.6
4H	24.2	24.9	24.6	25.2	25.5	24.0	24.7	24.4	25.0	25.3
6H	24.8	25.3	25.2	25.7	26.1	24.5	25.0	24.9	25.4	25.8
8H	24.9	25.5	25.3	25.8	26.2	24.6	25.1	25.0	25.5	25.9
12H	24.9	25.4	25.3	25.8	26.2	24.5	25.0	25.0	25.4	25.8
8H 4H	24.5	25.0	24.9	25.4	25.8	24.3	24.8	24.7	25.2	25.6
6H	25.1	25.5	25.6	26.0	26.4	24.8	25.3	25.3	25.7	26.1
8H	25.3	25.7	25.8	26.1	26.6	25.0	25.4	25.4	25.8	26.3
12H	25.3	25.6	25.8	26.1	26.6	25.0	25.3	25.5	25.8	26.3
12H 4H	24.5	25.0	24.9	25.4	25.8	24.3	24.8	24.7	25.2	25.6
6H	25.1	25.5	25.6	25.9	26.4	24.9	25.3	25.3	25.7	26.2
8H	25.3	25.6	25.8	26.1	26.6	25.0	25.3	25.5	25.8	26.3
Variations with the observer position at spacings:										
S = 1.0H	+ 0.1 / - 0.2					+ 0.2 / - 0.3				
1.5H	+ 0.1 / - 0.2					+ 0.2 / - 0.2				
2.0H	+ 0.1 / - 0.2					+ 0.1 / - 0.2				

CIE Pub.117 Corrected 16105 lm Total Lamp Luminous Flux. (8log(F/F0) = 9.7)

C Range: 0 - 360DEG
 C Interval: 10.0DEG
 Test Speed: HIGH
 Temperature:25.3DEG
 Operators:
 Test Date:2016-08-12

γ Range: 0 - 180DEG
 γ Interval: 1.0DEG
 Test System:EVERFINE GO-2000B_V1 SYSTEM V2.0.287
 Humidity:65.0%
 Test Distance:10.100m [K=1.0000]
 Remarks:

UTILIZATION FACTORS TABLE

Test:U:230.1V I:0.5816A P:129.4W PF:0.9669 Lamp Flux:76.6908x210 lm		
NAME: SPS1304-HL12B-210NW-60-5	TYPE:	WEIGHT:
SPEC.:	DIM.:	SERIAL No.:
MFR.:	SUR.:D212mm	PROTECTION ANGLE:

REFLECTANCE										
Ceiling	0.8	0.8	0.8	0.7	0.7	0.7	0.5	0.5	0.5	0
Walls	0.7	0.5	0.3	0.7	0.5	0.3	0.7	0.5	0.3	0
Working plane	0.2	0.2	0.2	0.2	0.2	0.2	0.2	0.2	0.2	0
ROOM INDEX	UTILIZATION FACTORS(PERCENT) $k(RI) \times RCR = 5$									
k = 0.60	82	75	71	82	75	71	81	75	71	67
0.80	90	83	79	89	83	79	88	82	78	74
1.00	95	88	84	94	88	84	92	88	83	79
1.25	99	93	89	98	93	89	96	91	88	83
1.50	102	97	93	101	96	92	99	94	91	86
2.00	106	101	97	104	100	96	101	97	95	89
2.50	108	103	100	106	102	99	103	99	97	90
3.00	110	106	102	108	104	101	104	101	99	92
4.00	112	109	106	110	107	105	106	104	102	94
5.00	114	111	109	111	109	107	107	105	104	96
ROOM INDEX	UF(total)									Direct
According to DIN EN 13032-2 2004			Suspended				SHRNOM = 1.25			

C Range: 0 - 360DEG
 C Interval: 10.0DEG
 Test Speed: HIGH
 Temperature:25.3DEG
 Operators:
 Test Date:2016-08-12

γ Range: 0 - 180DEG
 γ Interval: 1.0DEG
 Test System:EVERFINE GO-2000B_V1 SYSTEM V2.0.287
 Humidity:65.0%
 Test Distance:10.100m [K=1.0000]
 Remarks:

ISOCANDELA DIAGRAM

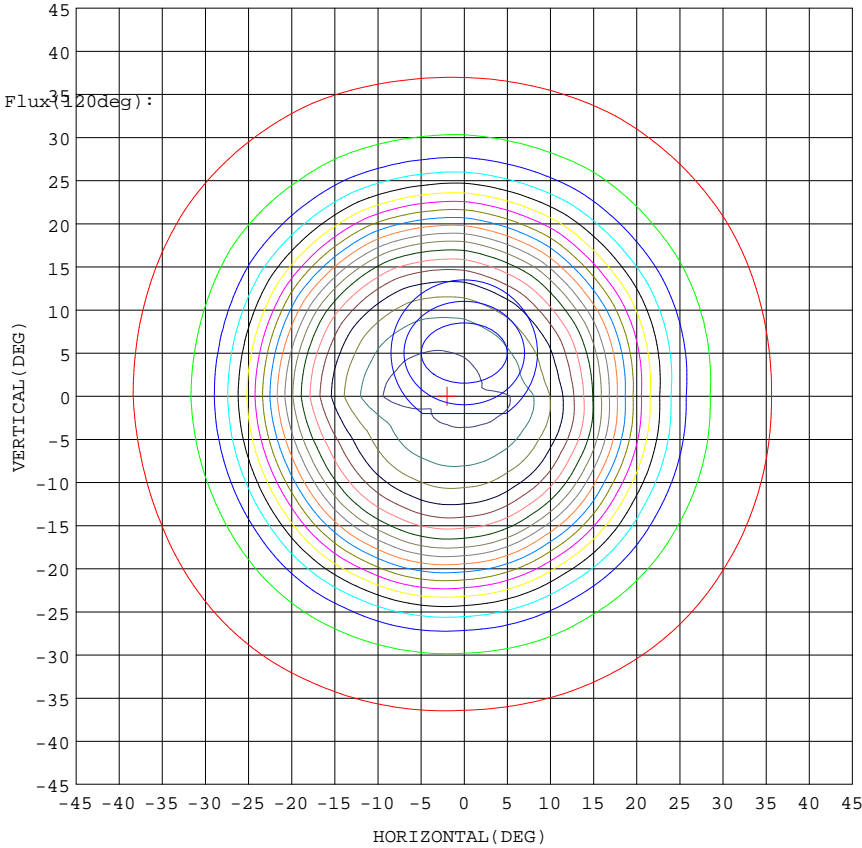
Test:U:230.1V I:0.5816A P:129.4W PF:0.9669 Lamp Flux:76.6908x210 lm		
NAME: SPS1304-HL12B-210NW-60-5	TYPE:	WEIGHT:
SPEC.:	DIM.:	SERIAL No.:
MFR.:	SUR.:D212mm	PROTECTION ANGLE:

Conical surface Flux(90deg):

14100 lm
%lum = 87.5%
%lamp = 87.5%

Conical surface Flux(30deg):

15051 lm
%lum = 93.5%
%lamp = 93.5%



1. AVG=29612, MIN=28279
2. AVG=29350, MIN=26758
3. AVG=28867, MIN=24534

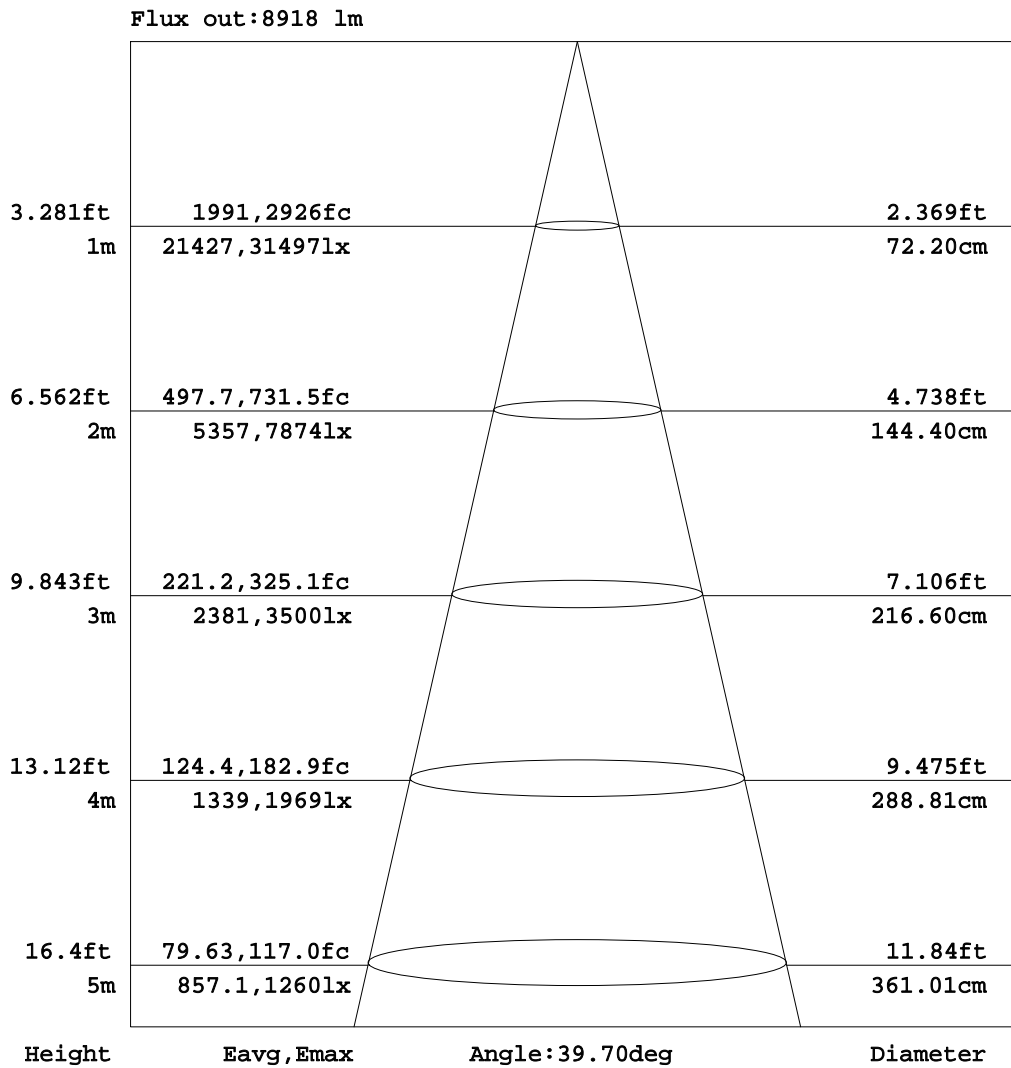
I_{max}:31531(H=2.0,V0.0)
(At:C=180.0,Gamma=2.0)
UNIT: cd

C Range: 0 - 360DEG
C Interval: 10.0DEG
Test Speed: HIGH
Temperature:25.3DEG
Operators:
Test Date:2016-08-12

γ Range: 0 - 180DEG
γ Interval: 1.0DEG
Test System:EVERFINE GO-2000B_V1 SYSTEM V2.0.287
Humidity:65.0%
Test Distance:10.100m [K=1.0000]
Remarks:

AAI Figure

Test:U:230.1V I:0.5816A P:129.4W PF:0.9669 Lamp Flux:76.6908x210 lm		
NAME: SPS1304-HL12B-210NW-60-5	TYPE:	WEIGHT:
SPEC.:	DIM.:	SERIAL No.:
MFR.:	SUR.:D212mm	PROTECTION ANGLE:



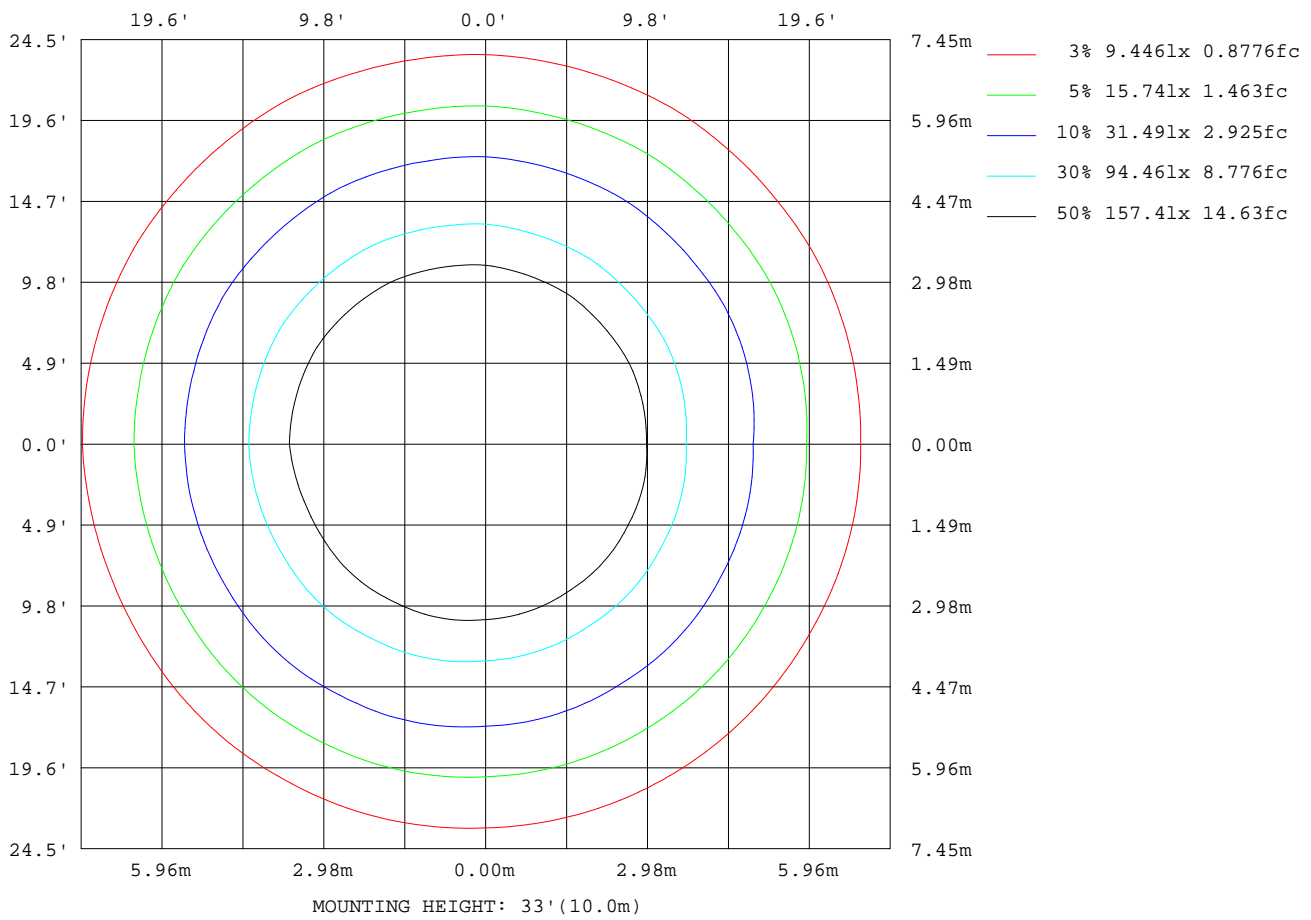
Note:The Curves indicate the illuminated area and the average illumination when the luminaire is at different distance.

C Range: 0 - 360DEG
 C Interval: 10.0DEG
 Test Speed: HIGH
 Temperature:25.3DEG
 Operators:
 Test Date:2016-08-12

γ Range: 0 - 180DEG
 γ Interval: 1.0DEG
 Test System:EVERFINE GO-2000B_V1 SYSTEM V2.0.287
 Humidity:65.0%
 Test Distance:10.100m [K=1.0000]
 Remarks:

ISOLUX DIAGRAM

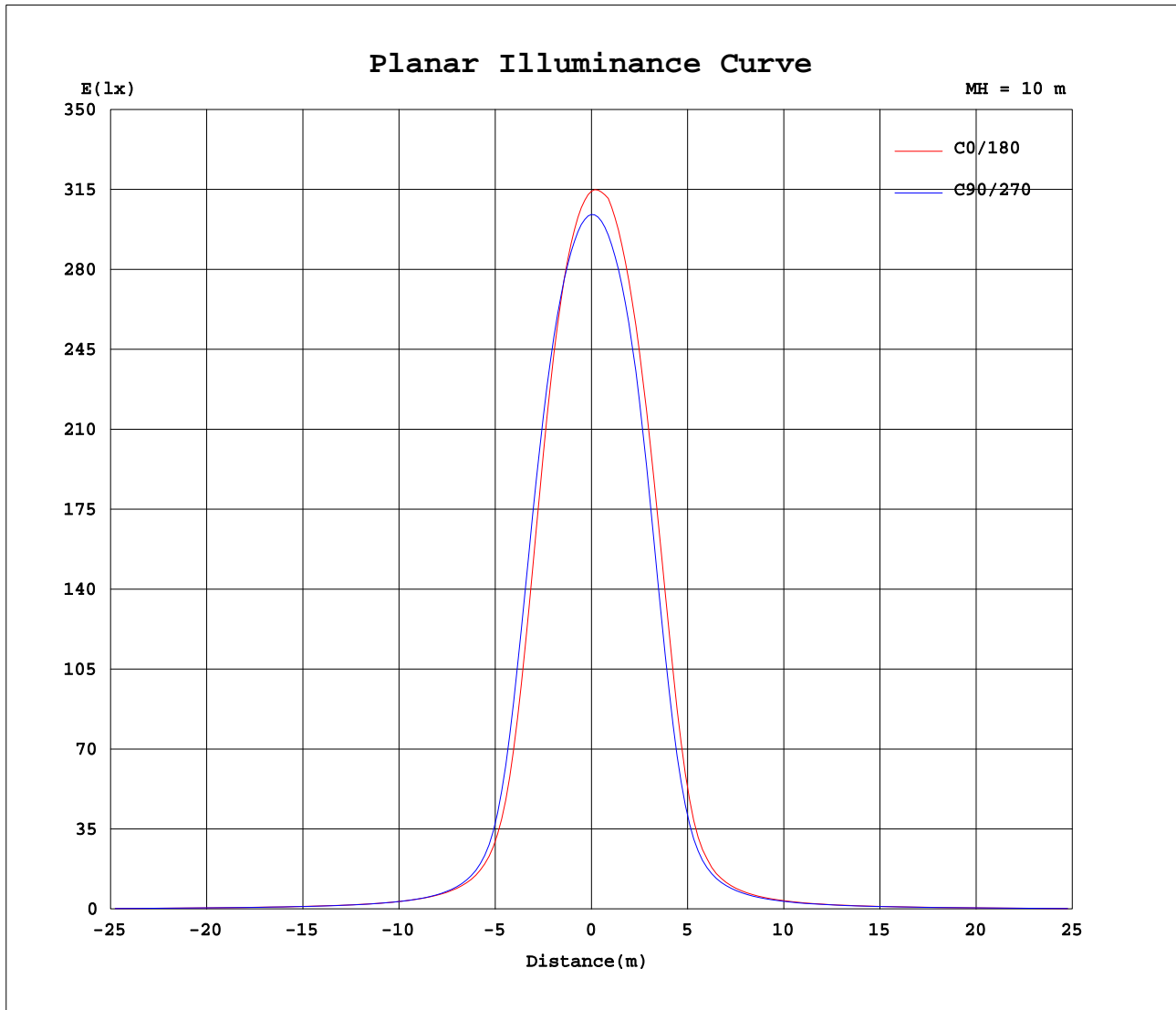
Test:U:230.1V I:0.5816A P:129.4W PF:0.9669 Lamp Flux:76.6908x210 lm		
NAME: SPS1304-HL12B-210NW-60-5	TYPE:	WEIGHT:
SPEC.:	DIM.:	SERIAL No.:
MFR.:	SUR.:D212mm	PROTECTION ANGLE:



C Range: 0 - 360DEG
 C Interval: 10.0DEG
 Test Speed: HIGH
 Temperature: 25.3DEG
 Operators:
 Test Date: 2016-08-12

γ Range: 0 - 180DEG
 γ Interval: 1.0DEG
 Test System: EVERFINE GO-2000B_V1 SYSTEM V2.0.287
 Humidity: 65.0%
 Test Distance: 10.100m [K=1.0000]
 Remarks:

Planar Illuminance Curve



C Range: 0 - 360DEG
 C Interval: 10.0DEG
 Test Speed: HIGH
 Temperature: 25.3DEG
 Operators:
 Test Date: 2016-08-12

γ Range: 0 - 180DEG
 γ Interval: 1.0DEG
 Test System: EVERFINE GO-2000B_V1 SYSTEM V2.0.287
 Humidity: 65.0%
 Test Distance: 10.100m [K=1.0000]
 Remarks:

LUMINOUS DISTRIBUTION INTENSITY DATA

Test:U:230.1V I:0.5816A P:129.4W PF:0.9669 Lamp Flux:76.6908x210 lm		
NAME: SPS1304-HL12B-210NW-60-5	TYPE:	WEIGHT:
SPEC.:	DIM.:	SERIAL No.:
MFR.:	SUR.:D212mm	PROTECTION ANGLE:

Table--1

UNIT: x10cd

C(DEG) γ (DEG)	0	10	20	30	40	50	60	70	80	90	100	110	120	130	140	150	160	170	180
0	3142	3138	3123	3101	3086	3073	3061	3053	3046	3041	3036	3032	3028	3026	3025	3025	3015	3061	3142
5	3010	3014	3001	2979	2972	2966	2957	2958	2959	2958	2964	2968	2969	2976	2981	2983	2978	3043	3147
10	2674	2691	2689	2678	2687	2692	2692	2707	2717	2723	2740	2752	2757	2775	2788	2793	2798	2865	2966
15	2032	2066	2078	2081	2116	2142	2156	2196	2226	2245	2284	2312	2329	2360	2382	2394	2412	2479	2568
20	1188	1215	1229	1240	1281	1314	1341	1398	1444	1479	1542	1593	1627	1679	1712	1727	1753	1809	1872
25	530	543	550	556	576	593	608	640	668	693	737	776	808	852	881	896	921	952	978
30	263	265	267	269	273	278	283	290	298	306	318	329	341	359	368	369	377	389	401
35	165	165	165	165	166	168	170	172	175	177	181	186	190	194	197	199	201	206	212
40	118	119	118	117	118	119	120	121	121	122	124	126	127	129	131	131	132	136	140
45	92.8	93.2	92.4	91.3	91.5	92.0	92.3	92.6	92.6	92.6	94.0	95.0	95.5	96.4	96.9	97.1	97.6	100.0	103
50	77.2	77.4	76.7	75.8	76.0	76.1	76.1	76.1	76.0	75.8	76.6	77.1	77.1	77.5	77.7	77.7	77.9	79.7	82.3
55	67.8	67.8	67.4	66.8	66.9	66.9	66.6	66.6	66.5	66.5	66.8	66.8	66.6	66.8	66.9	66.8	66.8	68.2	70.2
60	61.6	61.7	61.3	60.7	60.8	60.7	60.3	60.0	59.9	59.9	60.0	59.7	59.2	59.2	59.2	59.0	59.0	60.3	62.2
65	54.9	54.8	54.4	54.0	54.0	53.8	53.1	52.6	52.5	52.6	52.4	52.0	51.5	51.5	51.3	51.1	51.1	52.4	54.3
70	44.5	44.3	43.9	43.3	43.3	43.1	42.5	42.0	41.8	41.8	41.6	41.1	40.6	40.4	40.3	40.2	40.0	41.2	43.2
75	30.5	30.4	29.7	28.8	29.1	29.2	28.8	28.3	27.9	27.7	27.6	27.4	27.1	27.2	27.0	26.6	26.5	27.7	29.6
80	17.4	16.8	15.9	15.0	15.1	15.3	15.3	14.9	14.5	14.2	14.3	14.2	14.1	14.2	14.1	14.0	13.9	14.5	15.5
85	2.09	2.20	2.16	2.06	2.21	2.26	2.20	2.41	2.49	2.46	2.72	2.83	2.78	2.93	2.92	2.76	2.79	3.15	3.58
90	0.19	0.19	0.19	0.19	0.19	0.19	0.19	0.19	0.19	0.19	0.19	0.19	0.19	0.19	0.19	0.19	0.19	0.21	0.24
95	0.25	0.25	0.25	0.25	0.25	0.25	0.25	0.25	0.25	0.24	0.25	0.25	0.25	0.25	0.25	0.25	0.25	0.27	0.31
100	0.32	0.32	0.32	0.31	0.31	0.31	0.31	0.31	0.31	0.31	0.31	0.31	0.31	0.31	0.31	0.31	0.31	0.34	0.39
105	0.39	0.39	0.39	0.39	0.39	0.38	0.38	0.38	0.38	0.38	0.38	0.38	0.38	0.38	0.38	0.38	0.38	0.41	0.47
110	0.48	0.48	0.48	0.47	0.47	0.47	0.46	0.47	0.46	0.46	0.46	0.46	0.46	0.46	0.46	0.46	0.45	0.49	0.56
115	0.59	0.59	0.59	0.58	0.58	0.58	0.57	0.57	0.57	0.57	0.56	0.56	0.56	0.56	0.56	0.56	0.55	0.59	0.66
120	0.76	0.76	0.75	0.75	0.75	0.74	0.73	0.73	0.72	0.72	0.71	0.71	0.70	0.70	0.70	0.69	0.69	0.73	0.80
125	1.07	1.07	1.07	1.07	1.05	1.04	1.03	1.01	1.00	0.99	0.97	0.96	0.95	0.94	0.93	0.93	0.91	0.95	1.04
130	1.74	1.72	1.72	1.72	1.69	1.66	1.64	1.59	1.55	1.53	1.49	1.46	1.44	1.42	1.40	1.39	1.36	1.40	1.49
135	2.90	2.87	2.87	2.87	2.80	2.75	2.71	2.62	2.55	2.51	2.42	2.37	2.33	2.27	2.24	2.23	2.18	2.22	2.35
140	4.55	4.50	4.49	4.49	4.38	4.30	4.26	4.13	4.02	3.96	3.83	3.74	3.69	3.59	3.53	3.52	3.43	3.51	3.71
145	6.53	6.47	6.45	6.43	6.31	6.22	6.15	5.99	5.87	5.78	5.62	5.50	5.43	5.31	5.23	5.20	5.09	5.24	5.58
150	8.65	8.58	8.55	8.52	8.40	8.29	8.21	8.05	7.91	7.81	7.64	7.51	7.43	7.28	7.20	7.16	7.02	7.27	7.80
155	10.6	10.6	10.5	10.5	10.4	10.3	10.2	10.0	9.91	9.82	9.65	9.53	9.45	9.31	9.22	9.18	9.02	9.38	10.1
160	12.2	12.2	12.1	12.1	12.0	11.9	11.9	11.8	11.7	11.6	11.5	11.4	11.3	11.2	11.1	11.0	10.9	11.3	12.2
165	13.3	13.3	13.3	13.3	13.3	13.2	13.2	13.1	13.1	13.0	12.9	12.9	12.8	12.7	12.7	12.6	12.4	12.9	13.8
170	14.3	14.3	14.3	14.3	14.3	14.3	14.3	14.3	14.3	14.2	14.2	14.1	14.1	14.0	13.9	13.9	13.7	14.2	15.0
175	15.1	15.2	15.2	15.2	15.2	15.2	15.2	15.2	15.2	15.1	15.1	15.1	15.0	15.0	14.9	14.9	14.8	15.1	15.6
180	15.7	15.7	15.7	15.7	15.7	15.7	15.7	15.7	15.7	15.6	15.6	15.6	15.5	15.5	15.5	15.4	15.3	15.5	15.7

C Range: 0 - 360DEG
 C Interval: 10.0DEG
 Test Speed: HIGH
 Temperature:25.3DEG
 Operators:
 Test Date:2016-08-12

γ Range: 0 - 180DEG
 γ Interval: 1.0DEG
 Test System:EVERFINE GO-2000B_V1 SYSTEM V2.0.287
 Humidity:65.0%
 Test Distance:10.100m [K=1.0000]
 Remarks:

LUMINOUS DISTRIBUTION INTENSITY DATA

Test:U:230.1V I:0.5816A P:129.4W PF:0.9669 Lamp Flux:76.6908x210 lm		
NAME: SPS1304-HL12B-210NW-60-5	TYPE:	WEIGHT:
SPEC.:	DIM.:	SERIAL No.:
MFR.:	SUR.:D212mm	PROTECTION ANGLE:

Table--2

UNIT: x10cd

C(DEG) γ (DEG)	190	200	210	220	230	240	250	260	270	280	290	300	310	320	330	340	350		
0	3144	3123	3101	3086	3073	3061	3053	3046	3041	3036	3032	3028	3026	3025	3025	3015	3049		
5	3130	3098	3077	3056	3039	3024	3007	2994	2984	2972	2961	2953	2944	2937	2933	2919	2939		
10	2955	2928	2912	2889	2868	2848	2821	2797	2778	2748	2725	2707	2681	2664	2654	2635	2638		
15	2562	2546	2537	2505	2474	2444	2394	2351	2315	2259	2213	2181	2132	2100	2083	2056	2036		
20	1865	1852	1842	1794	1749	1708	1636	1579	1537	1470	1421	1392	1337	1304	1293	1259	1222		
25	969	965	964	920	884	861	804	765	747	705	677	664	629	611	608	587	561		
30	397	397	400	385	375	371	350	335	328	315	306	302	293	287	285	279	272		
35	212	211	211	206	202	200	194	189	187	182	179	178	174	171	170	168	166		
40	140	139	138	136	134	134	130	128	127	125	123	123	120	119	119	118	117		
45	103	102	101	99.9	99.3	99.1	97.1	95.6	95.0	94.0	93.5	93.3	92.0	91.2	91.2	90.5	90.8		
50	81.7	80.9	80.5	79.6	79.2	79.2	78.2	77.4	77.1	76.6	76.3	76.2	75.5	75.1	75.2	74.8	75.3		
55	69.7	69.1	68.8	68.2	67.8	67.6	67.2	67.0	66.8	66.5	66.2	66.0	65.8	65.7	65.8	65.6	66.2		
60	61.8	61.2	61.0	60.5	60.3	60.3	59.9	59.9	60.1	59.8	59.6	59.5	59.4	59.4	59.6	59.5	60.0		
65	53.7	53.2	53.2	52.9	52.8	52.8	52.5	52.6	53.2	52.9	52.7	52.9	52.7	52.8	53.2	53.0	53.4		
70	42.7	42.3	42.5	42.1	42.1	42.7	42.3	42.5	43.0	42.7	42.7	43.0	42.8	43.0	43.5	43.1	43.2		
75	29.1	28.6	28.6	28.3	28.7	29.5	29.2	29.1	29.3	29.0	29.1	29.6	29.5	29.7	30.1	29.5	29.4		
80	15.3	15.0	15.0	14.8	15.0	15.6	15.5	15.4	15.5	15.7	16.1	16.7	16.7	17.4	18.5	16.8	16.1		
85	3.16	2.90	2.93	2.63	2.51	2.56	2.29	2.22	2.37	2.19	2.21	2.41	2.23	2.22	2.40	2.32	2.20		
90	0.24	0.23	0.23	0.23	0.23	0.23	0.22	0.22	0.23	0.22	0.22	0.22	0.22	0.22	0.22	0.22	0.21		
95	0.31	0.30	0.30	0.30	0.30	0.30	0.30	0.29	0.30	0.29	0.29	0.29	0.29	0.29	0.29	0.29	0.28		
100	0.39	0.38	0.38	0.38	0.37	0.37	0.37	0.37	0.37	0.37	0.37	0.37	0.37	0.37	0.37	0.37	0.35		
105	0.47	0.46	0.46	0.46	0.45	0.46	0.45	0.45	0.45	0.45	0.45	0.45	0.45	0.45	0.45	0.45	0.43		
110	0.56	0.55	0.55	0.54	0.54	0.54	0.54	0.54	0.54	0.54	0.54	0.54	0.54	0.54	0.54	0.54	0.53		
115	0.66	0.65	0.65	0.65	0.65	0.65	0.65	0.65	0.65	0.65	0.65	0.65	0.65	0.65	0.66	0.66	0.64		
120	0.80	0.80	0.79	0.79	0.79	0.79	0.80	0.80	0.80	0.80	0.81	0.81	0.82	0.82	0.83	0.84	0.82		
125	1.05	1.04	1.03	1.04	1.05	1.04	1.06	1.06	1.07	1.09	1.10	1.11	1.13	1.14	1.15	1.17	1.16		
130	1.51	1.51	1.50	1.53	1.54	1.55	1.58	1.61	1.62	1.68	1.71	1.72	1.78	1.81	1.82	1.87	1.86		
135	2.39	2.39	2.39	2.44	2.47	2.49	2.56	2.61	2.66	2.75	2.81	2.85	2.94	2.99	3.00	3.08	3.06		
140	3.77	3.77	3.78	3.85	3.91	3.96	4.05	4.13	4.20	4.32	4.41	4.47	4.58	4.65	4.70	4.79	4.76		
145	5.63	5.63	5.64	5.73	5.80	5.87	5.99	6.09	6.17	6.31	6.42	6.50	6.62	6.71	6.77	6.88	6.82		
150	7.87	7.84	7.83	7.92	8.01	8.07	8.20	8.31	8.40	8.55	8.67	8.75	8.89	8.99	9.04	9.17	9.07		
155	10.2	10.1	10.1	10.2	10.2	10.3	10.4	10.5	10.6	10.7	10.8	10.9	11.0	11.1	11.2	11.3	11.1		
160	12.3	12.2	12.1	12.2	12.2	12.2	12.3	12.4	12.5	12.5	12.6	12.7	12.8	12.8	12.8	12.9	12.7		
165	13.9	13.8	13.7	13.7	13.7	13.8	13.8	13.8	13.8	13.9	13.9	13.9	14.0	14.0	14.0	14.0	13.8		
170	15.0	14.9	14.9	14.9	14.9	14.9	14.9	14.9	14.9	14.9	14.9	14.9	14.8	14.8	14.8	14.8	14.7		
175	15.6	15.6	15.6	15.6	15.5	15.5	15.5	15.5	15.5	15.4	15.4	15.4	15.4	15.3	15.3	15.3	15.2		
180	15.7	15.7	15.7	15.7	15.7	15.7	15.7	15.7	15.6	15.6	15.5	15.5	15.5	15.4	15.3	15.3	15.4		

C Range: 0 - 360DEG
 C Interval: 10.0DEG
 Test Speed: HIGH
 Temperature:25.3DEG
 Operators:
 Test Date:2016-08-12

γ Range: 0 - 180DEG
 γ Interval: 1.0DEG
 Test System:EVERFINE GO-2000B_V1 SYSTEM V2.0.287
 Humidity:65.0%
 Test Distance:10.100m [K=1.0000]
 Remarks: